

Indices

Boletín semanal Índices IBEX® / Weekly bulletin IBEX® Indexes.

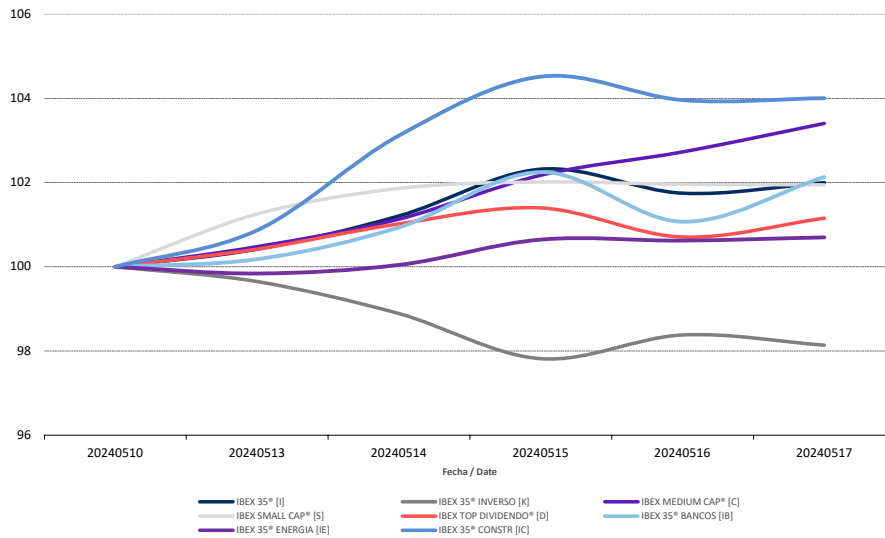
13/05/2024

17/05/2024

	Cierre/Closing	Máximo/Max*	Mínimo/Min*	Rentabilidad/Yield	Rent. anual/ Annual Yield
IBEX 35® [I]	11.327,7	11.362,8	11.152,0	2,00%	12,13%
IBEX 35® CON DIV [J]	38.604,1	38.714,0	37.995,9	2,03%	14,49%
IBEX 35® INVERSO [K]	1.573,4	1.597,6	1.568,3	-1,86%	-10,62%
IBEX MEDIUM CAP® [C]	14.774,7	14.774,7	14.356,7	3,40%	9,04%
IBEX SMALL CAP® [S]	8.844,9	8.850,9	8.784,6	1,95%	11,32%
IBEX TOP DIVIDENDO® [D]	3.251,3	3.259,0	3.227,6	1,15%	17,60%
IBEX 35® BANCOS [IB]	862,0	863,0	845,5	2,13%	28,89%
IBEX 35® ENERGIA [IE]	1.466,9	1.466,9	1.454,3	0,70%	2,59%
IBEX 35® CONSTR [IC]	2.044,4	2.054,5	1.982,7	4,00%	4,24%

* sobre cierres diarios

Evolución Semanal Índices / Indices Weekly Evolution



Ranking Semanal Valores IBEX 35® / IBEX35® Stocks Weekly Ranking:

Ranking subidas / Top performing stocks		
Cod./Sym.	Valor/Company	Rentabilidad/Yield
FER	FERROVIAL SE	7,06%
COL	INM.COLONIAL	6,99%
AMS	AMADEUS IT	5,33%
CLNX	CELLNEX	5,32%
GRF	GRIFOLS	4,99%

Ranking bajadas / Bottom performing stocks		
Cod./Sym.	Valor/Company	Rentabilidad/Yield
ENG	ENAGAS	-2,76%
IAG	INT.AIRL.GRP	-1,52%
SLR	SOLARIA	-1,25%
CABK	CAIXABANK	-0,83%

Secretaría de Gestión de los Índices

Email: ibex@grupobme.es

Tel.: 91.709.53.86